

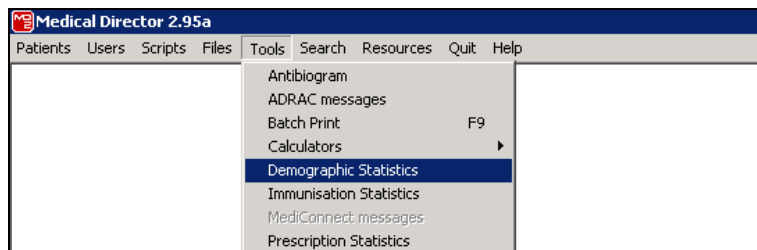
## Medical Director V2 - Patient Demographic Summary

The Demographic Statistics window displays a summary of the demographic information of all patients in the database. The total number of patients on file is counted and an age and sex breakdown is produced. The percentage of patients who do not have their age or sex recorded is also calculated.

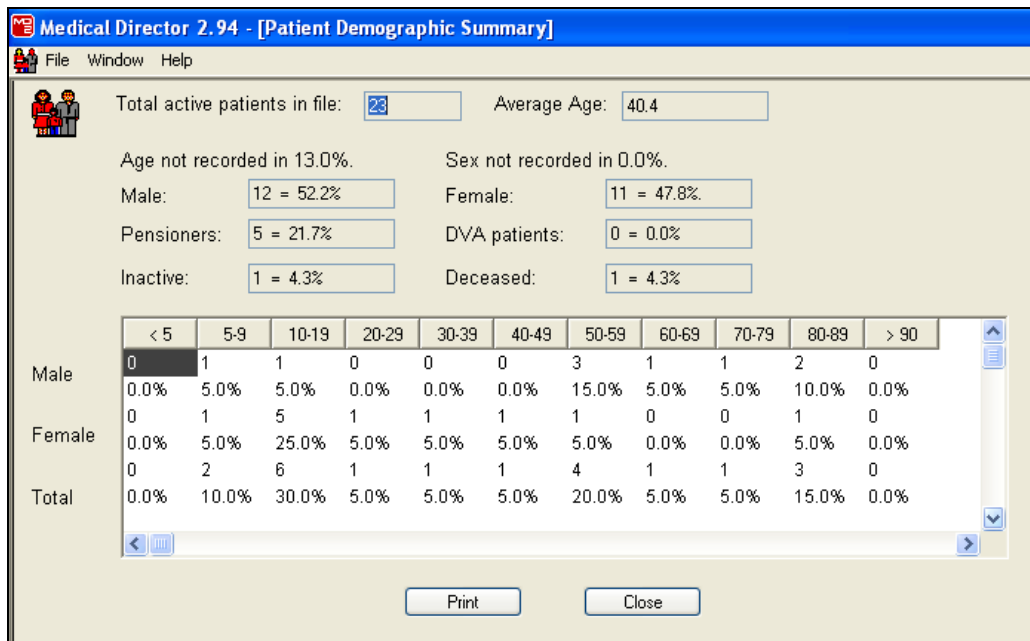
- If there are a large number of patients on file, or if you are using a slower computer, these calculations can take some time.

To access your Practice Patient Demographics follow the instructions below:

1. Close any patient record. In the **Main Screen**, go to **Tools** and **Demographic Statistics**.



2. The **Patient Demographic Summary** screen will appear.



The screenshot displays the 'Patient Demographic Summary' window. It shows the following statistics:

- Total active patients in file: 23
- Average Age: 40.4
- Age not recorded in 13.0%
- Sex not recorded in 0.0%
- Male: 12 = 52.2%
- Female: 11 = 47.8%
- Pensioners: 5 = 21.7%
- DVA patients: 0 = 0.0%
- Inactive: 1 = 4.3%
- Deceased: 1 = 4.3%

	< 5	5-9	10-19	20-29	30-39	40-49	50-59	60-69	70-79	80-89	> 90
Male	0	1	1	0	0	0	3	1	1	2	0
	0.0%	5.0%	5.0%	0.0%	0.0%	0.0%	15.0%	5.0%	5.0%	10.0%	0.0%
Female	0	1	5	1	1	1	1	0	0	1	0
	0.0%	5.0%	25.0%	5.0%	5.0%	5.0%	5.0%	0.0%	0.0%	5.0%	0.0%
Total	0	2	6	1	1	1	4	1	1	3	0
	0.0%	10.0%	30.0%	5.0%	5.0%	5.0%	20.0%	5.0%	5.0%	15.0%	0.0%

Buttons for 'Print' and 'Close' are located at the bottom of the window.

- Click the **Print** button to print the summary.
- Click the **Close** button to return to the Main window.

Note: Utilise Medical Director Help Menu to search further information.  
Help → Index → Search → Type 'Demographic Summary' → Display.

This document has been created by SEA-GP (Brisbane) using screen shots and content from Medical Director Program.

**Disclaimer:** Whilst every effort is made to ensure accuracy, SEA-GP (Brisbane) does not accept any liability for any injury, loss or damage incurred by or reliance on the information contained within this information sheet.