

Disclaimer: Whilst every effort is made to ensure accuracy, SEA-GP (Brisbane) and acknowledged contributors do not accept any liability for any injury, loss or damage incurred by of or reliance on the information contained within this information sheet.

Background

The following information is relevant to Medical Director users only. By utilising HL7 pathology downloads a more comprehensive patient record can be achieved.

Background

Medical Director currently integrates with third party healthcare information network providers such as HealthLink and Medical Objects. Medical Director currently dispatches HL7 pathology request messages using the provider to the appropriate laboratory. Providers in turn deliver pathology results to Medical Director where they are stored and displayed to the Practitioner.

Medical Director now allows processing the data exchange events during patient discharge. As an example, when a patient is discharged from a hospital and referred to a specialist for treatment, a Discharge Referral and Discharge Summary message is sent to the specialist and GP respectively from the hospital's computer system using a health care network provider (for example HealthLink).

A discharge referral is analogous to a paper-based discharge referral document.

The Discharge Summary message arrives on the GP's computer using a health care network where they are stored in the appropriate import folder. Medical Director responds to the receipt of this message by transmitting an acknowledgement message to the referrer. The acknowledgement message for referral messages is known as the Referral Response Message.

Each message may contain one or more referral segments and information such as:

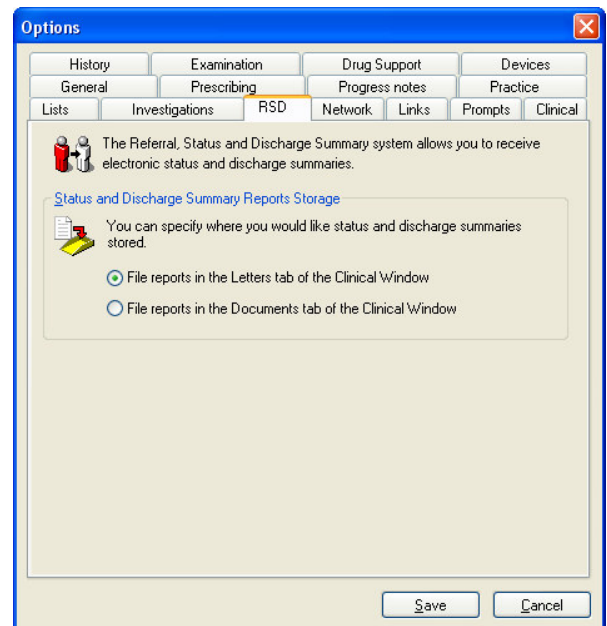
- Provider information
- Patient identification
- Next of kin
- Diagnosis (optional)
- Allergies (optional)
- Optional observation requests and results

Incoming messages will be imported into Medical Director in the same fashion as pathology results (that is using the F4 key). When this key is pressed, Medical Director scans all the configured folders relating to the installed healthcare network providers in order to locate pending incoming messages.

The new documents are then stored in the Investigations Holding File and Discharge Summaries are clearly labelled.

RSD Tab

The RSD tab allows you to setup electronic referrals and be the recipient of progress information in Medical Director.



The following fields and buttons are displayed on this window:

Field Name	Description
Enable electronic referrals	<p>Note: This check box has not used in this release of Medical Director.</p> <p>Allows you to set up Medical Director to use electronic referrals.</p>
Process status and discharge summaries	Used to indicate that incoming status and discharge summaries will be processed in Medical Director.
File reports in the Letters tab of the Clinical window	Allows you to set up Medical Director to file the incoming reports in the Letters tab of the Clinical window.
File reports in the Documents tab of the Clinical window	Allows you to set up Medical Director to file the incoming reports in the Documents tab of the Clinical window.
Save button	Saves the settings.
Cancel button	Cancels the window.

Acknowledgments: SEA-GP (Brisbane) wishes to acknowledge the valuable contributions from Dr Peter Adkins in the development of this information sheet.